



Chestnut Grove | | Mitcham | CR4 1RE

**Offers In Excess Of £550,000**



Chestnut Grove |  
Mitcham | CR4 1RE  
Offers In Excess Of £550,000

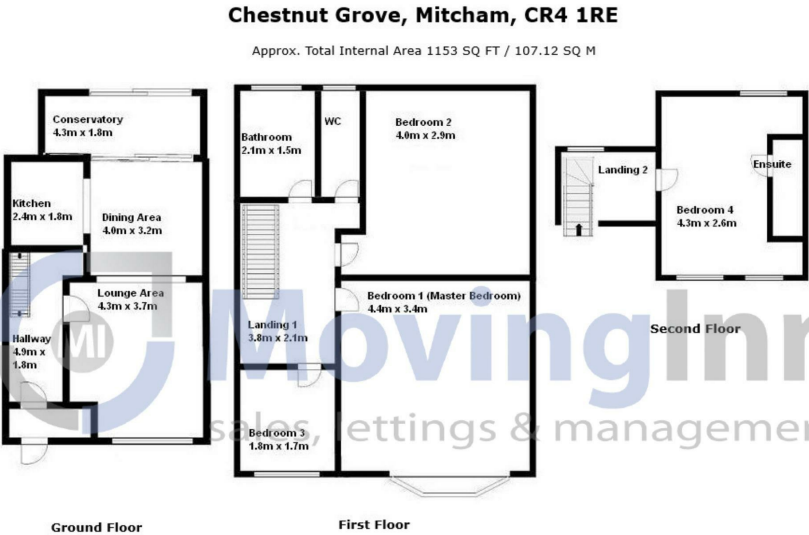
Welcome to Chestnut Grove, Mitcham, where an exceptional opportunity awaits you. Presenting a stunning 4-bedroom, 2-bathroom end of terrace house for sale, chain free. This spacious property boasts a conservatory, a double reception, and a low maintenance rear garden, making it an ideal family home. With freehold tenure, this sought-after location offers the convenience of a driveway, providing own parking space for residents or guests.

Located within close proximity to several renowned educational institutions, including William Morris Primary School, Gonville Academy, and Winterbourne Boys' Academy, this property ensures access to quality education for families. Additionally, LH Consulting & Education and Al Quran College are nearby for further education and professional development.



Energy Efficiency Rating		
	Current	Potential
Very energy efficient - lower running costs		
(92 plus) A		
(81-91) B		
(69-80) C		78
(55-68) D	64	
(39-54) E		
(21-38) F		
(1-20) G		
Not energy efficient - higher running costs		
England & Wales		EU Directive 2002/91/EC

Council Tax Band D  
EPC Rating D



**For Illustration Purposes Only - Not To Scale**  
This floor plan should be used as general outline for guidance only.  
All measurements are approximate and for illustration purposes only as defined by the RICS Code of Measuring Practice.

467 Norwood Road  
West Norwood  
London  
SE27 9DJ  
02087610830  
dean@movinginn.co.uk  
www.movinginn.co.uk